

APEX 2.4: Perception and the Embodied mind

Key Terms: Perception and the Embodied Mind

closure ✦
 conscious
 continuity
 embodied cognition ✦
 embodied mind ✦
 feature detectors ✦
 figure and ground ✦
 Gestalt ✦
 perception ✦
 perceptual constancy ✦
 perceptual set ✦
 phi phenomenon ✦
 proximity (Gestalt) ✦
 similarity (Gestalt) ✦
 two-track mind ✦
 unconscious ✦

Directions:

Complete Apex: "Perception of the Embodied Mind"

- 2.4.1 Study Poll: What do you see? (20pts)
- 2.4.2 Study: Perception and the embodied mind (20pts)
- Quiz: Perception of the Embodied Mind (20pts)

Create a poster describe one of the following optical illusions:

- Muller-Lyer Illusion
- Shape Consistency Illusion
- Figure-Ground Perception
- Closure Perception/Illusion
- Ames Room Perception

_____ Title (20pts)

_____ Paragraph explaining the illusion (20pts)

_____ Image 1 (give an example of the optical illusion) (20pts)

_____ Image 2 (give an example of the optical illusion) (20pts)

* You may hand draw or use internet pictures



2.4.1 Study: Poll: What do you See?

Psychology (S1758562)

Study Sheet

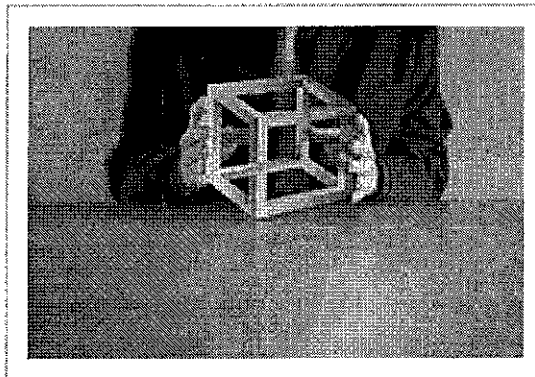
Name: _____

Date: _____

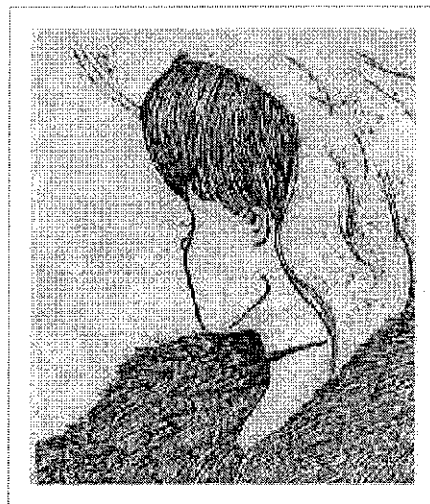
In this activity, you have a chance to answer questions that are similar to questions that psychologists may ask themselves when they begin to study a topic.

Use this study sheet to keep track of your answers and thoughts. After you have completed the lesson, go back to your answers and ask yourself how you would answer the questions based on what you have learned. Returning to these questions will help you understand the most important parts of the lesson much better.

1. Look at this cube. Look at it closely. Why does it look so strange?

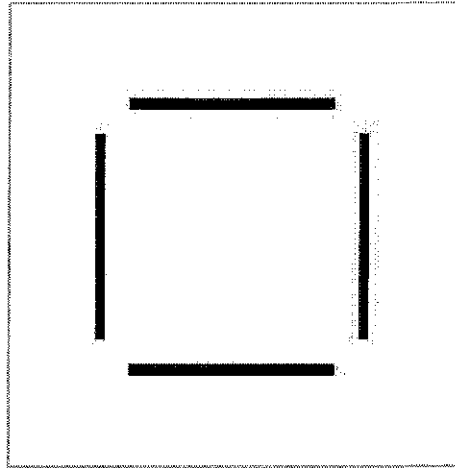


2. The picture on this page is famous in psychology. People perceive it in different ways. What do you see what you look at this picture?



3. Take a good look at this image. Do you see a square? This image has something to do with the definition

of perception. What is a good definition for perception?



Copyright © 2011 Apex Learning Inc. (See **Terms of Use** at www.apexvs.com/TermsOfUse)

Perception and the Embodied Mind



2.4.2 Study: Perception and the Embodied Mind

Study Sheet

Psychology (S1758562)

Name: _____

Date: _____

Use the spaces below to take notes on the key concepts presented in this study.

Perception

Description:

Relationship to psychology:

What the brain must do to create perception:

Gestalt

Define:

Explain the puzzle metaphor:

Explain how the brain works:

Explain the phi phenomenon:

Gestalt Principles of Organization

Figure and ground:

Define:

Example:

Similarity:

Define:

Example:

Proximity:

Define:

Example:

Continuity:

Define:

Example:

Closure:

Define:

Example:

Feature Detection

Explain *feature detection*:

Top-down:

Bottom-up:

Similarities to Gestalt principles of organization:

Perceptual Constancy and Perceptual Set

Explain *perceptual constancy*:

Example:

Explain *perceptual set*:

Example:

Perception and Consciousness

Explain *visual cliff experiment*:

Results, significance:

Explain *two-track mind*: The brain operates on two levels: a conscious level and an unconscious level.

Conscious level:

Unconscious level:

Embodied Mind

Why the brain cannot exist without the rest of the body:

Importance of peripheral nervous system:

Define *embodied cognition*:

Thoughts are rooted in:

What can happen when the brain is deprived of sensory input:

Copyright © 2011 Apex Learning Inc. (See [Terms of Use](http://www.apexvs.com/TermsOfUse) at www.apexvs.com/TermsOfUse)